

MESSAGE BOARD



EARLY DISMISSAL NOTES

Please send in early dismissal notes with your child in the morning if they are going to be leaving before dismissal on that day. This helps to locate the classroom that the student is in at that particular time and also informs the teacher in advance. It cuts down on the disruption of class instruction and the wait time for parents. Thank you for your assistance in helping us make early dismissals a smoother process.

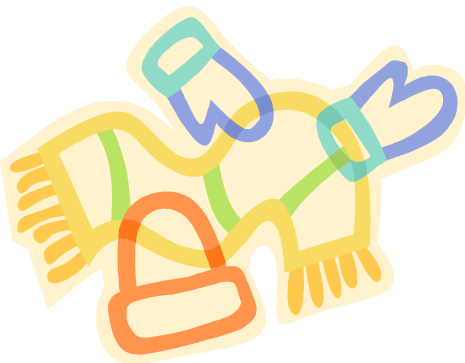


VISITORS

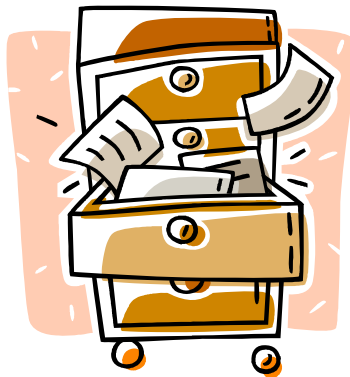
All visitors to the school are to come to the office after entering the front doors. It is necessary, for the safety of our students and staff, to have this policy in place and followed. Always sign in and receive a pass, unless directed otherwise. Thanks!!!

WEATHER CHANGES

Just a reminder that as the weather begins to change, please make sure that students dress accordingly. To much clothing is always better than not enough. Layers can always be taken off and kept in lockers, but if they are not available, a student is left to be chilly and distracted. Also keep in mind that the nurse only has a limited amount of clothing and not all sizes available for those students who do not dress appropriately for the weather.



As personal information be updated with the of the old information and event of an emergency or members for various other emergency contacts, concerns, cafeteria, etc... Make this a regular help to better serve you current.



UPDATED RECORDS

about your child changes, the office needs to information as well. This helps us to get rid have the current information available in the as the need arises to contact family reasons. Phone numbers, addresses, arrival and dismissal plans, residency, nurse all need to be as up-to-date as possible. routine as your changes occur. This will and your child and will keep our records



LUNCH ACCOUNTS

If your child buys lunch in the cafeteria and keeps money on his/her account or brings the money daily, please remember to send it with your child or replenish the account. Please include your child's name on the payment so it may be easily identified. Letters are distributed on a regular basis from the cafeteria informing parents of the amount left in the account. By Baltimore County Policy, the cafeteria can only lend students a certain amount of money for breakfast and lunch and then they are given cereal, crackers and juice to hold them over until they return home.



VOLUNTEERS/PARENTS

Our volunteers and parents are the BEST!!!! As a school community, we appreciate all of the hard work and time that each of you give to Carney and its students and staff. We would not be able to do it without you all. Your dedication is well recognized throughout the school and we are grateful to have so much support each and everyday.

Hats off to all of you!!!! You deserve it!!!!



SAFETY PATROL

Our school safeties have gotten off to a great start this year. Keep up the good work!!! The safeties are stationed at various parts of the school building and grounds to assist in the arrival and dismissal of our students. Carney students are reminded that the safeties are there to enforce the Carney Cougar Rules. Instructions given by the safeties should be followed by all students.



INCLEMENT WEATHER

Inclement weather will soon be approaching us and there are many questions that arise about the school's schedules. Please post the flyer, included on the website, in your home for easy access when inclement weather is upon us. Also be sure to listen to the television and the radio for up-to-the-minute updates.