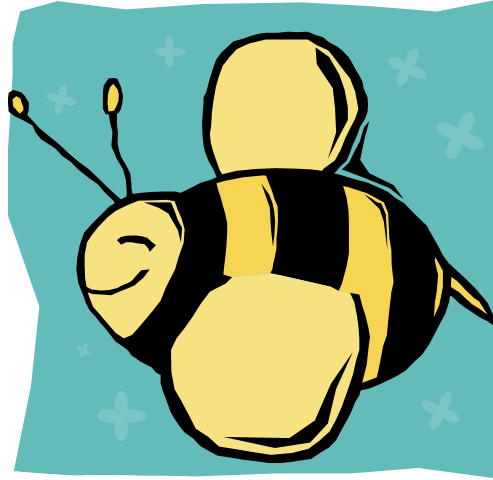


Halethorpe's Mission

Halethorpe Elementary School is a community of teachers, students, administrators, families, and support staff dedicated to providing a caring, safe, nurturing, and intellectually stimulating environment, where all students are challenged to maximize their unique potential to become life-long learners and responsible citizens.



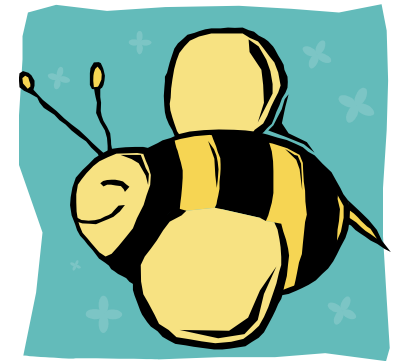
Halethorpe Elementary School

*4300 Maple Avenue
Baltimore, MD 21227*

**Phone: 410-887-1406
Fax: 410-887-7407**

Halethorpe Elementary School

School Counseling Program



Ms. Leonhartt
Professional School
Counselor

*4300 Maple Avenue
Baltimore, MD 21227*

**Email: rleonhartt@bcps.org
Phone: 410-887-1406
Fax: 410-887-7407**

What is School Counseling?



The School Counseling program at Halethorpe Elementary is available to help students, parents, and teachers develop positive learning experiences. The program consists of a variety of services and activities, including individual and group counseling, parent and teacher consultation, group and classroom guidance, coordination of school wide programs such as "Peer Mediators" and "Peer Helpers" information services, participation in educational meetings, and referral assistance to other programs and services in the community.

Working in conjunction with the administration, staff, parents and teachers, the program is developed to meet the needs of all students.

Parents are more than welcome to meet with me to discuss any concerns that they may have or just to chat. Please call 410-887-1406 for an appointment.

Individual Counseling

This is a one-to-one, personal interaction between a counselor and a student to resolve problems, undertake new tasks, or explore concerns. In school this is usually based on a brief, action-oriented counseling model, although some students may require multiple sessions.

Classroom Guidance

Classroom lessons are taught throughout the school year. All grade levels are involved in these lessons and topics vary, but emphasize the three main goals of Baltimore County's essential guidance curriculum which are school success for all students, competency in decision making and increased career awareness, and better understanding and respect of self and others. A variety of teaching strategies are used to meet the needs of all students while making it an enjoyable learning experience.

Group Counseling

This strategy involves the counselor working with a small number of students at the same time on issues of mutual interest or concern. Under the leadership of the school counselor, group members share experiences, explore thoughts and feelings, receive and give feedback, gain new information, role play new skills, and identify goals and actions necessary for improved functioning.

Confidentiality

All interactions with the school counselor are confidential. There are three situations in which the counselor is obligated by law to break confidentiality. They are: if the student discloses that he/she is hurting him/herself or someone else, and if the counselor suspects child abuse or neglect. In all cases, outside services will be contacted for assistance.



School Counseling is for all children