



Pot Spring Press

Principal's Message

Happy New Year! The beginning of a new year provides a wonderful opportunity to reflect on the past and make plans for the future. The staff at Pot Spring continually reflects on their instructional practices in relation to student progress and makes adjustments according to those results. Our goal is to have every student be on or above grade level in both reading and math as measured by county, state and federal assessments. On the Maryland State Assessment that was given to all of our third, fourth and fifth grade students last year our students met adequate yearly progress in all

areas. Differentiation in both math and reading has been a continuing focus for our staff.

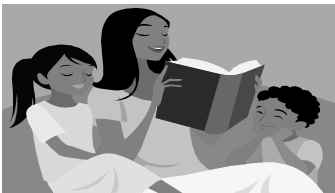
In addition, this year we have broadened our use of the environment as a context to teach all subjects in our continuing efforts to have students apply their knowledge and skills in an authentic way. Our hard work is paying off. In every grade the students have shown improvement on the math and reading short cycle assessments given at the end of each unit/theme. In addition, more and more of our students are mastering the required math facts for their grade level. We know

that this improvement does not happen without your support at home.

Thanks for all that you do to help your child make improvement in all subject areas. Just by reviewing their homework on a daily basis, spending 10 minutes a day reviewing flashcards and encouraging them to do their best work at all times leads to academic improvement. Together we can accomplish great things!



Student Behavior Handbook



Mrs. Martin and I will be revisiting all of the classes in the next couple of weeks to review the student behavior handbook. Please

take a few minutes to go over the handbook that was sent home with your child at the beginning of the year.

Save the Dates

Environmental Evening - Tuesday, March 18th

Science Fair - Tuesday, April 29th - Thursday, May 1st

Earth Day, Every Day '08 - Friday, May 23rd

POT SPRING
ELEMENTARY SCHOOL

Volume 5

January 10, 2008

Karen Harris

Principal

kharris@bcps.org

Jane Martin

Assistant Principal

jude@bcps.org

Carol Jones

PTA President

ctjbalto1@aol.com

Inside this issue:

KG Registration	2
PK Screening	2
Instrumental Music	2
SECAC Meeting	2
CAEAC Meeting	2
From the Nurse	3
PTA Corner	4

Kindergarten/First Grade Registration

Kindergarten registration for the 2008-2009 school year will be held on Thursday, April 17th. If your child

will be five years of age by September 1, 2008, please contact the school office at 410-887-7648 to receive a reg-

istration packet. First graders who will be entering Pot Spring may also register at this time.

Pre-Kindergarten Screening

Pre-Kindergarten screening for the 2008-2009 school year will be held on Wednesday, April 23rd. If

your child will be four years of age by September 1, 2008 and you are interested in having him/her screened,

please contact the school office at 410-887-7648 to receive a screening packet.

Instrumental Music

The band and string ensemble enjoyed performing for the school at the Winter Holiday Concert. We are now ready to start learning new notes and music. The Instrumental Music Spring Concert will be in May. Our first report cards will go home after the 2nd marking period. Keep practicing! The fourth grade Exploratory Music students are studying the string family and have built a cardboard box violin. They will see, hear and explore the cello, viola, and double bass.

Mrs. Hendry



Web Sites

Please be sure to visit Pot Spring's web site at <http://potspringes.bcps.org> as well as the new Pot Spring PTA web site at <http://potspringptspta.org>.

Congratulations

Congratulations to Samantha L. for having her Bluebird poem published in the January 2nd edition of the Towson Times. Way to go, Samantha!

Special Education Citizen's Advisory Committee

The Special Education Citizen's Advisory Committee is pleased to present an informational meeting on Monday, January 14th. The topic of the meeting is Emotional Disabilities (EDs). The meeting will be held at the ESS Building, Room 114, at 6901 Charles Street from 7-9 p.m.

Central Area Education Advisory Council (CAEAC)

The Central Area Educational Advisory Council (CAEAC) of Baltimore County Public Schools is pleased to present an informational meeting to discuss Field Trips—Policy & Guidelines. The meeting will be held on January 17th at Warren Elementary School at 7 p.m.. For directions or questions, please call the Central Area Office at 410-887-3172.

Mental Illness Support

NAMI (National Alliance on Mental Illness)-Metropolitan Baltimore offers a unique program for family members of individuals with mental illness. Four free Family to Family Education courses are being offered. The courses run for 12 weeks and are taught by other trained, volunteer family members. The program is designed to help families effectively cope with a loved one's mental illness. Interested persons must call to register. To find out more information call 410-435-2600. The courses are located in East Baltimore, Catonsville, NW Baltimore and Govans.

Winter Art Classes

Winter Art classes are being offered by the Community Art Center of Towson University. A wide range of 8-week classes for children and teens will begin January 19th. Call 410-704-2351 for information or cac@towson.edu. Visit www.towson.edu/cac.

From the Nurse

- Please notify the nurse if you suspect any evidence of head lice. You will also need to notify the nurse if a sibling attends a different school.
- Students with food allergies are to have a plastic container of "safe snacks" kept in their classroom for class parties.
- Homemade foods are not allowed for class parties. Every item must be labeled with ingredients.
- Baltimore County has very specific guidelines for medication use in school.
 - Students may not carry medicine to school - a parent needs to bring it to the nurse.
 - Absolutely no meds are to be in a lunch box.
 - All meds, even over-the-counter meds must be in a labeled bottle with a written doctor's order. (This is not the label on the bottle.) Medication may not be given without the order.
 - Orders can be faxed to Mrs. A. @ 410-887-7649.
- Please notify the nurse by note or email (babdulwohab@bcps.org) if your child has an injury and requires sutures, splints, casts. A doctor's note is required to specify gym/recess limitations and a note is needed to resume activities.
- Students taking meds for ADHD: Please send Mrs. A. the name of the med, dosage and frequency taken @ home. Knowing what med is taken is important for any interactions, side effects, and in case of an emergency situation.

SYMPTOM	COLD	FLU
Fever	Fever is rare with a cold.	Fever is usually present with the flu in up to 80% of all flu cases. A temperature of 100°F or higher for 3 or 4 days is associated with the flu.
Coughing	A hacking, productive (mucus-producing) cough is often present with a cold.	A non-productive (non-mucus producing) cough is usually present with the flu (sometimes referred to as dry cough).
Aches	Slight body aches and pains can be part of a cold.	Severe aches and pains are common with the flu.
Stuffy Nose	Stuffy nose is commonly present with a cold and typically resolves spontaneously within a week.	Stuffy nose is not commonly present with the flu.
Chills	Chills are uncommon with a cold.	60% of people who have the flu experience chills.
Tiredness	Tiredness is fairly mild with a cold.	Tiredness is moderate to severe with the flu.
Sneezing	Sneezing is commonly present with a cold.	Sneezing is not common with the flu.
Sudden Symptoms	Cold Symptoms tend to develop over a few days.	The flu has a rapid onset within 3-6 hours. The flu hits hard and includes sudden symptoms like high fever, aches and pains.
Headache	A headache is fairly uncommon with a cold.	A headache is very common with the flu, present in 80% of flu cases.
Sore Throat	Sore throat is commonly present with a cold.	Sore throat is not commonly present with the flu.
Chest Discomfort	Chest discomfort is mild to moderate with a cold.	Chest discomfort is often severe with the flu.

PTA CORNER

2008 is going to be great, so save the date to participate!

The PTA brings people together...to make our school a better place. We fundraise...to make our school a better place. We ask for your support...to make our school a

better place! All our initiatives, both big and small, strengthen our school. Our money goes to needed school equipment and supplemental school programs such as upcoming Kindergarten Round-up, reading, math and green school programs, the science

fair, Picture Parent visual arts instruction, extra teacher supplies, community outreach workshops, and the traditional 5th grade graduation and graduation party. Thank you for supporting these and other important PTA initiatives.

Outback Steak Night

You are cordially invited to our first family dinner night at Pot Spring Elementary! Outback Steak Night is coming January 31, 2008 to our very

own school cafeteria. The tickets are limited and are sold on a first come first sold basis. Watch for a flyer to come home. Contact Outback Steak

Night Chairpersons, *Chairpersons, Amy C. 410-252-0341 and Tina W. 410-252-6252* for details.

PTA Board Positions

Please consider sharing your special talents by serving on the PTA board. Two positions will become open this Fall. The position of Vice President of Fundraising, Events and

Programs is currently held by Maryann Carter. The position of Secretary is currently held by Melissa Whatley. Please contact Maryann, Melissa or Carol Jones if you are in-

terested. We are hoping to slate these positions as soon as possible so the new officers can shadow Maryann and Melissa.

Box Tops

Donna P. is chairing our most successful Box Top initiative in Pot Spring history! Thank you Donna. Look out - 1st grade is winning so far! Class Totals as of 1/3/08:

Pre-K and K \$81.90

1st Grade \$ 110.50 - in the lead!

2nd Grade \$64.60

3rd Grade \$78.10

4th Grade \$109.10

5th Grade \$70.40

PTA Audit

The Pot Spring PTA recently completed a successful official audit. Many thanks to Carol T. and Tina W. for their many hours of dedication to this project. Please contact Carol J. with any questions.

Thank You!

Thank you to Barb D., Mike C. and Bev B. for all their efforts organizing the Pizza and Cookie Dough Sales. Much thanks also go to March K. and Emily M. for their help with the Pizza Sales (for distribution). Our holiday cookie spreads tasted delicious and those quick pizza meals were oh so good.

Please add the attached names to your Pot Spring Directory.