

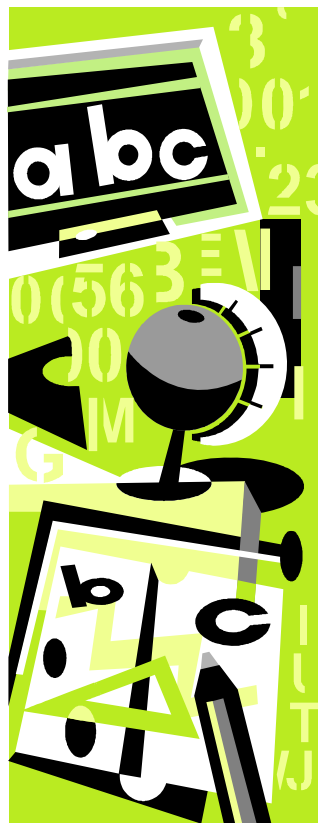
Getting ready for 2009 – 2010

★*Keep this paper someplace convenient for easy reference during the summer*

School Begins at 8:15am.

The first day of school for all students is **Monday, August 31st**. Schedules will be mailed to your homes during mid-August. That mailing will also include:

- ☑ Welcome Letter from the Principal, Ms. K. Johnson
- ☑ Emergency cards to be completed and brought to school on the first day
- ☑ PTA Membership envelope
- ☑ Bus card, transportation schedule, and information
- ☑ AMS Parent Handbook
- ☑ School Supply List
- ☑ Cafeteria Price List
- ☑ Miscellaneous Materials Regarding School Resources including an Email Directory Form



Registration for 2008– 2010

Do you know someone who needs to register a child for school? If you have a new neighbor who has a child that is middle-school age, encourage them to register the child as soon as possible during the summer! To make an appointment for registration, call the school at 410-887-1402. Early registration will give us time to enter the student in the system so that he/she will be able to begin on the first day of school.

Open House

Our annual Open House for 6th graders and their parents/guardians is scheduled for **Thursday, August 27** from **4:00 – 6:00 pm**. Invitations to the Open House will be mailed with 6th grade schedules in mid-August. Students who attend the Open House will have a chance to meet their homeroom teachers, try lockers, meet their teachers, purchase PE uniforms, and visit the School Store. All students must be accompanied by an adult.

Back-to-School Night

Back-to-School Night is an evening during which you can meet your child's teachers, learn about classroom expectations and procedures, and help to establish a cooperative relationship with the school. Our "Back-to-School Night" is scheduled for **Wednesday, September 9, 2009**, beginning at **6:30 p.m.** in the gym.

Information Please

If you need some information during the summer, consider checking the Arbutus Middle School website at www.bcps.org/schools/CMS/arbutus. The website includes a link to a section of FAQs

New Check Policy

For the 2009-2010 school year, Arbutus Middle School will no longer accept personal checks. For your convenience, money orders, bank issued cashier's checks, and cash will be accepted. Staff will keep a log of all transactions and give receipts.

